


Thank you for purchasing our electric fuel pump kit. We feel this is an excellent upgrade for the Little Birds. We have installed this fuel pump in our own shop and have found it to be very reliable. If you have any questions or comments please contact our technical assistance line at 740/622-9700. 

Electric Fuel Pump Installation Instruction - '55-'57 T-Birds

Please read and understand all instructions before proceeding with the installation of this pump.

Caution:

Installation of this fuel pump requires cutting into the fuel line. Precautions must be made to assure that the line has been drained of all gasoline prior to doing this. Failure to do so can result in serious injury or death. Gasoline is extremely flammable and care must be taken to keep gasoline and its vapors away from any sparks or flame!

Your electric fuel pump comes with brackets and attaching parts that have been specifically designed to work on your Classic Thunderbird. On most cars it will not be necessary to drill any holes. Also provided is an on-off switch and mounting bracket if you want to use your electric fuel pump for starting only. It is not necessary to run your electric fuel pump at all times but it is, of course, OK to do so if you wish.

Automatic transmission:

The pump unit should be mounted on the frame using the existing two threaded holes as shown in figure 1. These two holes are for standard shift clutch linkage and are not used on T-Birds equipped with automatic transmission.

Manual transmission:

If your T-Bird does have a standard shift transmission you will have to remove the clutch linkage support bracket so that the fuel pump bracket can be mounted under it against the frame. As an alternative the clutch linkage support bracket can be loosened and slots cut into the fuel pump bracket to the mounting holes such that the fuel pump bracket can be simply slid under the clutch linkage support bracket and then bolts tightened.

1. Disconnect the battery.
2. Disconnect the fuel line at the junction block under the drivers door and have someone hold their finger over the end of the line running to the tank so that no gasoline will run out of the tank. Also remove the steel line at the manual fuel pump mounted on the engine. This will allow any gasoline in the steel line to drain away. Wipe up any spilled gasoline and dispose of gasoline soaked rags outside in an open area.
3. When the fuel pump is mounted onto the frame you will need to cut the steel line such that at least 1" of the line will be inside each end of the flexible fuel line. Use tubing cutters and take care to prevent dirt, chips, etc. from entering the cut lines. Remove the black rubber plugs that may have been installed in the ends of the rubber tubing. Secure the flexible hose to the steel line with the clamps provided.
4. Re-attach the steel line at the manual fuel pump and re-attach the line at the junction block. Again wipe up any spilled gasoline and dispose of rags properly. It is important to do this in sequence to minimize the chances of excessive gasoline leakage.

5. Check for any leakage of gasoline and eliminate all leaks before proceeding.
6. The on-off switch can be mounted under the dash as shown in figure 4. Mounted in this position the switch will not be visible.
7. The long black wire will run from the connection on the electric fuel pump to the switch. We have found that this can be best done by feeding the wire through the electrical wiring grommet in the upper left hand (drivers side) of the fire wall. The shorter white wire will run from the other side of the switch to the accessory terminal on the ignition switch.
8. Reconnect the battery.
9. When installed the electric fuel pump will run with the ignition switch in either the accessory or the on position if the pump's toggle switch is in the on position.
10. When the installation is complete be sure to check once again for any signs of gasoline leakage. When you are satisfied that there are no leaks you are ready to go.

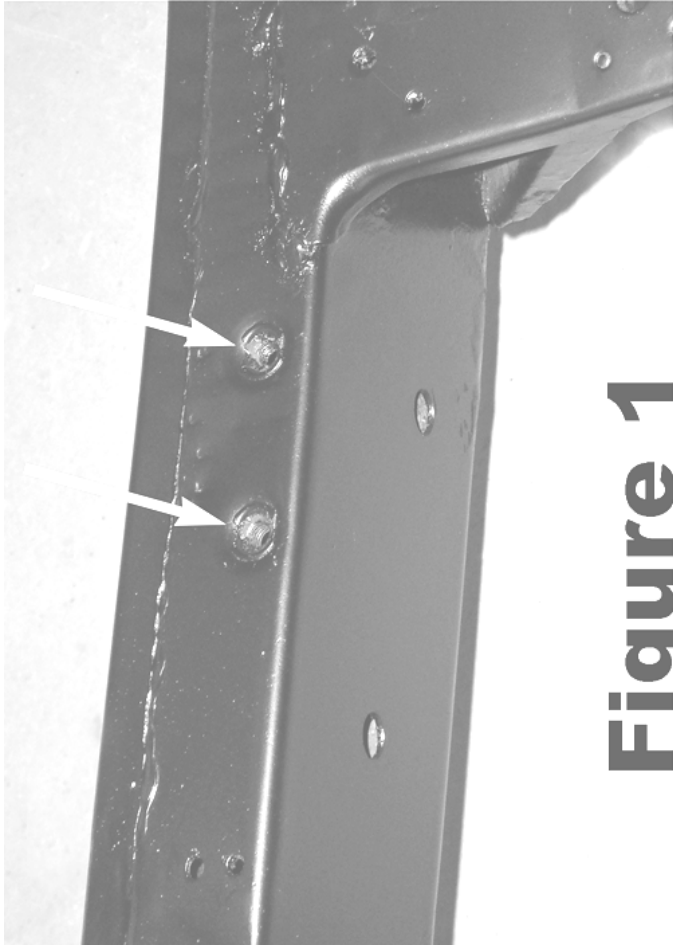


Figure 1

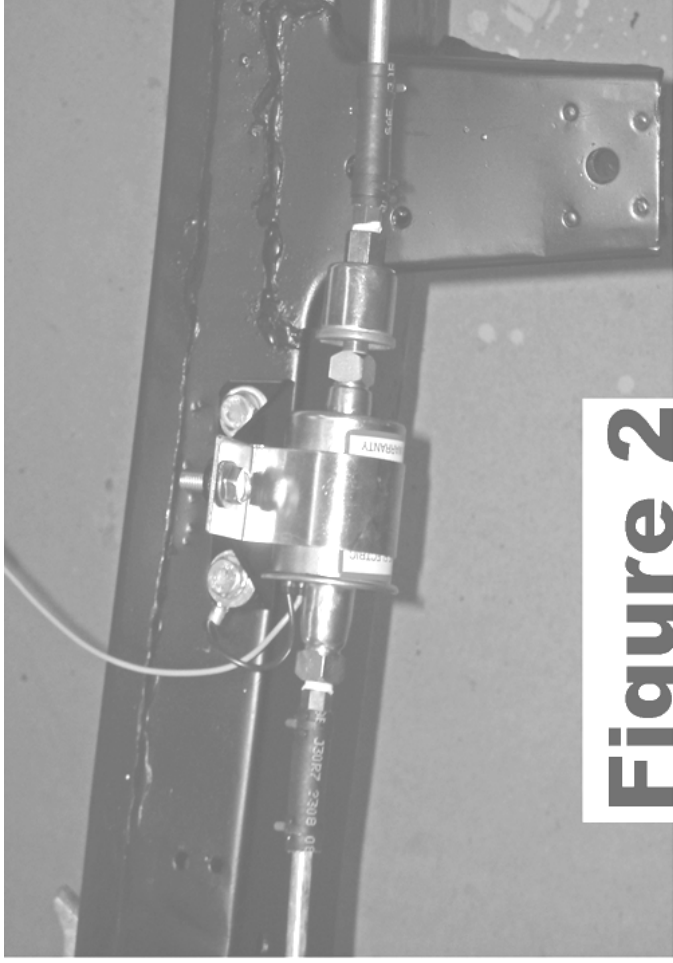


Figure 2



Figure 3



Figure 4